



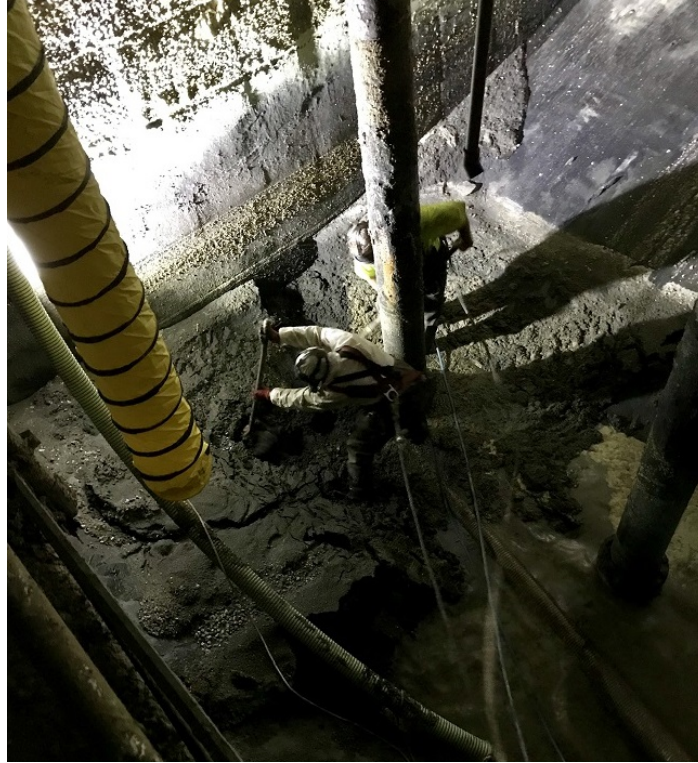
U.S. SUBMERGENT
INSIDER



**FREE
QUOTE**

(844) 765-7866

80-Cubic Yards Removed from Wet Well Challenging Confined Space Entry in Anastasia Island



Having been several years since its last cleaning, Anastasia Island's influent wet well had accumulated a significant amount of sand, grit, and rag material. We spoke to James Overton, P.E., at St. Johns County Utility Department about the issues the facility was facing and how the USST crew removed 80-CY of material, despite a challenging and potentially dangerous environment.

[READ MORE](#)

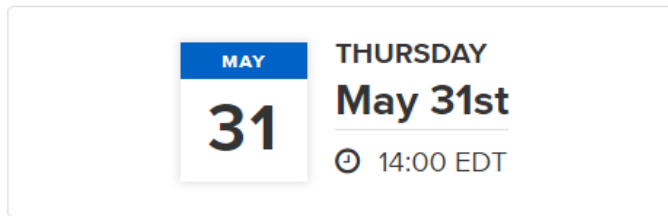
A Solution to Limiting Confined Space Entry in the Wastewater Industry



Confined spaces can be deadly. In the wastewater maintenance industry, there are many situations that can require confined space entry, including wet wells, digesters, or aeration basins with high tank walls. USST's equipment and capabilities have the potential to reduce the amount of time, risk, and manpower spent in confined space entry required to get the job done.

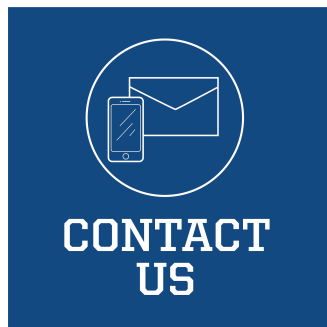
[READ MORE](#)

Save The Date: Webinar The GritGone ProcessSM with Q&A Session



Wondering how our GritGone ProcessSM works? Join CEO Denver Stutler, Jr. as he goes through USST's capabilities and processes. Take advantage of our Q&A session to ask anything or to get specific assistance regarding an issue you may be experiencing at your facility. Register below to attend the webinar and get the full scoop.

[REGISTER NOW](#)



[Our GritGone ProcessSM](#) | [Watch The Video](#)



Our mailing address is:

U.S. Submergent Technologies
6450 University Blvd, Unit 1
Winter Park, FL 32792

© 2018, All rights reserved.

[unsubscribe from all emails](#) | [update subscription preferences](#)